

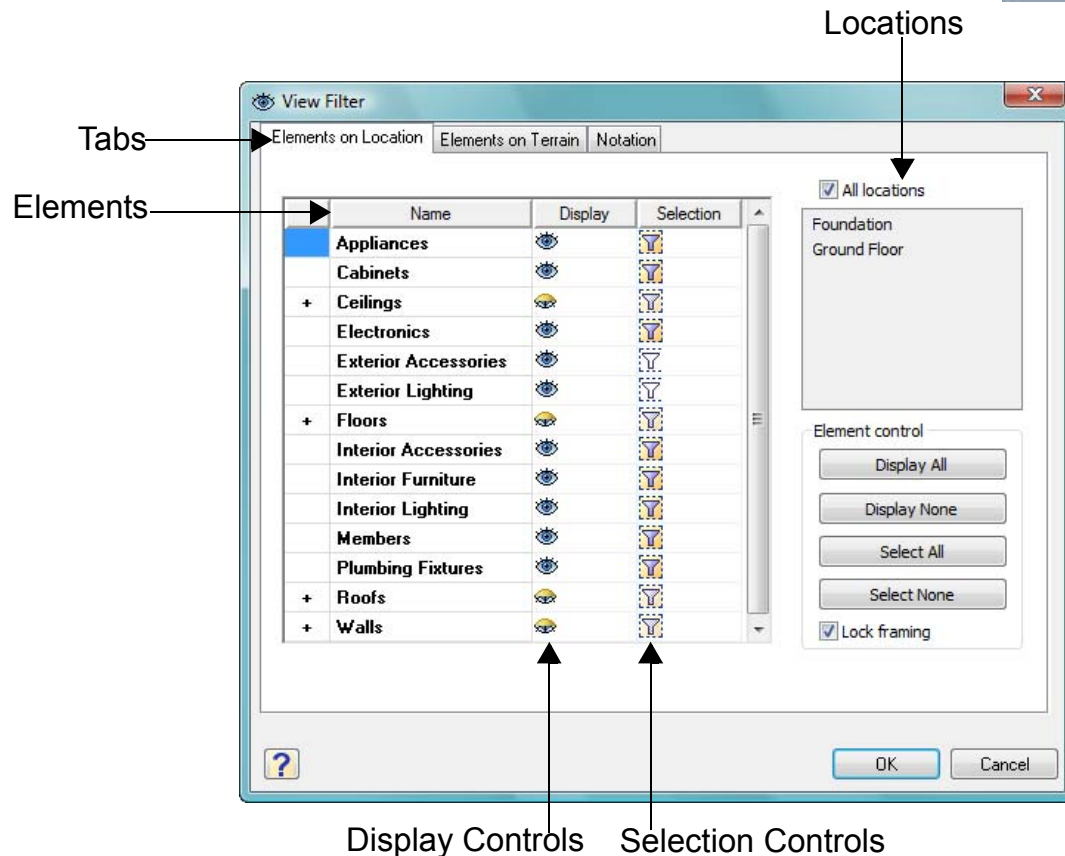
## Using the View Filter

Use the View Filter to control the visibility and selectability of elements, locations, and notation objects.

You can display or hide selected element types. All elements are located on building locations. You can display or hide element types on all or selected building locations. You can control whether or not element types can be selected. You can't use the View Filter to show or hide specific elements. For example, you can hide all doors, but not one specific door, nor can you hide all entry doors.

To open the *View Filter* dialog box:

- Click the **View Filter** button on the View Control toolbar.
- Open the **View** menu and select **View Filter**.



The *View Filter* dialog box contains three tabs:

- The **Elements on Location** tab lists all the elements that are associated with building locations.
- The **Elements on Terrain** tab lists the terrain and landscaping elements that are associated with the terrain.

- The **Notation** tab lists text, dimensions, drafting objects, project trace images, and electrical wiring, if they're included in your drawing.

The icons in the **Display** column indicate whether or not an element is currently displayed. Click an icon to hide or display an element.



Display element.



Hide element.



Some of an element's components are displayed, and some aren't displayed.

- Click **Display All** to display all elements on the current building location.
- Click **Display None** to hide all elements on the current building location.
- Select the **Lock Framing** check box to lock the visibility of wall, roof, floor, and ceiling framing its current state, regardless of what you select.

For more information about displaying and hiding elements, see [“Displaying and Hiding Elements on Locations” on page 220](#) and [“Displaying and Hiding Elements on the Terrain” on page 221](#).

The icons in the **Selection** column indicate whether or not an element can be selected. Click an icon to make the element selectable or non-selectable.



Element is selectable.



Element is not selectable.



Some of an element's components are selectable, and some aren't selectable.

- Click **Select All** to makes all elements on the current building location selectable.
- Click **Select None** to make all elements on the current building location non-selectable.

**Note:** *You can't select framing.*